



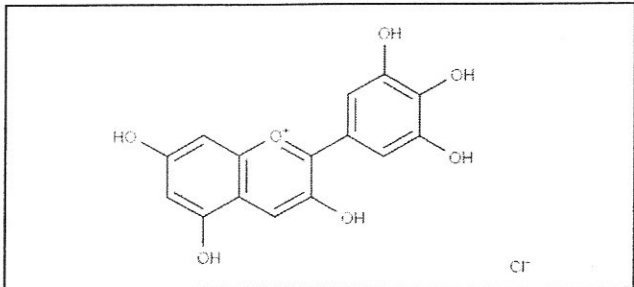
# INDOFINE Chemical Company, Inc.

121 Stryker Lane, Bldg. 30  
Hillsborough, NJ 08844 USA  
Phone: (908) 359-6778; Fax: (908) 359-1179

## Certificate Of Analysis

**020904S**                      **DELPHINIDIN CHLORIDE**                      **Lot No.: 18041662**

CAS RN	528-53-0
MOL FORMULA	C <sub>15</sub> H <sub>11</sub> O <sub>7</sub> Cl
MOL WEIGHT	338,70

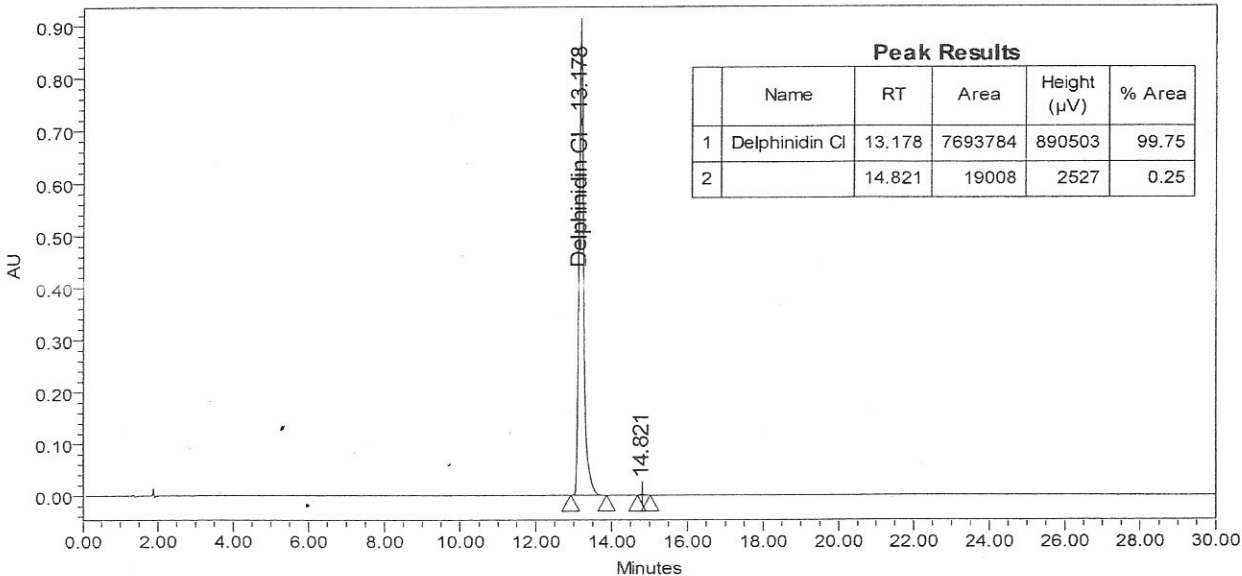


TEST	METHOD	UNIT	SPECIFICATION	RESULT
Appearance	Visual		Dark powder	Conform
Potency	UV		ε (548 nm, MeOH+0,1% HCl) = 38 800 +/- 3000	40140
Water content	KF	% w/w		9,5
Residual solvents	GC-HS	% w/w		1,0
Inorganics	ICP-MS	% w/w		0,1
Purity	HPLC	% area	≥ 97,0	99,8
<b>Assay</b>	<b>Calculated (*)</b>	<b>% w/w</b>		<b>89,2</b>

(\*) Assay = Purity by HPLC x (100 - %water - %solvents - %inorganics)

### CHROMATOGRAPHIC PURITY / HPLC

Column : Atlantis dC18 - 4,6x150 mm - 3 μm                      Temperature : 30°C  
 Mobile phase : Gradient: B from 5% to 60% in 20 min then 60% to 100% in 5 min then 5 min isocratic 100%                      Flow rate : 1 ml/min  
 A = Water + 10% HCOOH / B = MeOH                      Injection volume : 5 μl  
 Detection : UV 530 nm                      Injection solvent : MeOH + 0,1% HCl



LONG TERM STORAGE : Below -15°C in a dry and dark place

TRANSPORT CONDITIONS : Ambient temperature